



Agile and SEMAT Perfect Partners

Ivar Jacobson
with
Ian Spence and Pan Wei Ng

Software Engineering Method And Theory



Founded in September 2009:

Ivar Jacobson – Bertrand Meyer – Richard Soley

40 individual signatories

2,000 supporters – 20 corporate signatories – 20 academic signatories

The SEMAT logo, featuring the word "SEMAT" in blue, with the letter "A" replaced by a stylized compass.

COMMUNITY

www.semat.org

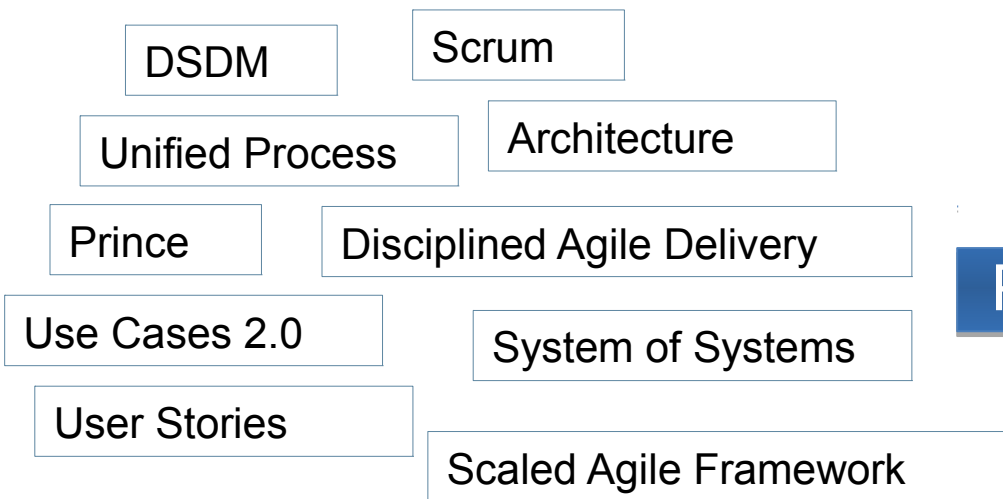
What is SEMAT?



Let's wait a little by getting into what it is

Let's instead start by saying

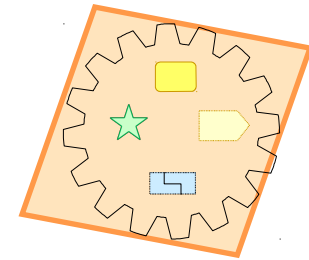
- It doesn't compete with any method – agile or pre-agile
- Instead it powers other methods/practices – agile or pre-agile



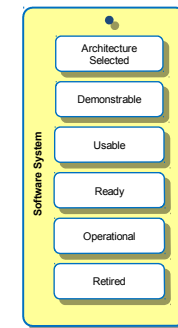
There are particularly three things that are new with SEMAT



1. SEMAT relies on a common ground or a kernel



2. The kernel is actionable



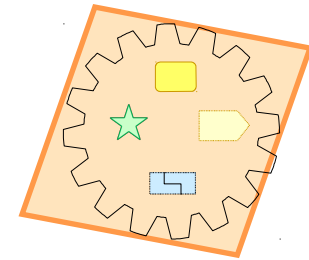
3. It relies on an intuitive graphical syntax



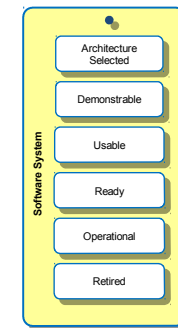
There are particularly three things that are new with SEMAT



1. SEMAT relies on a common ground or a kernel



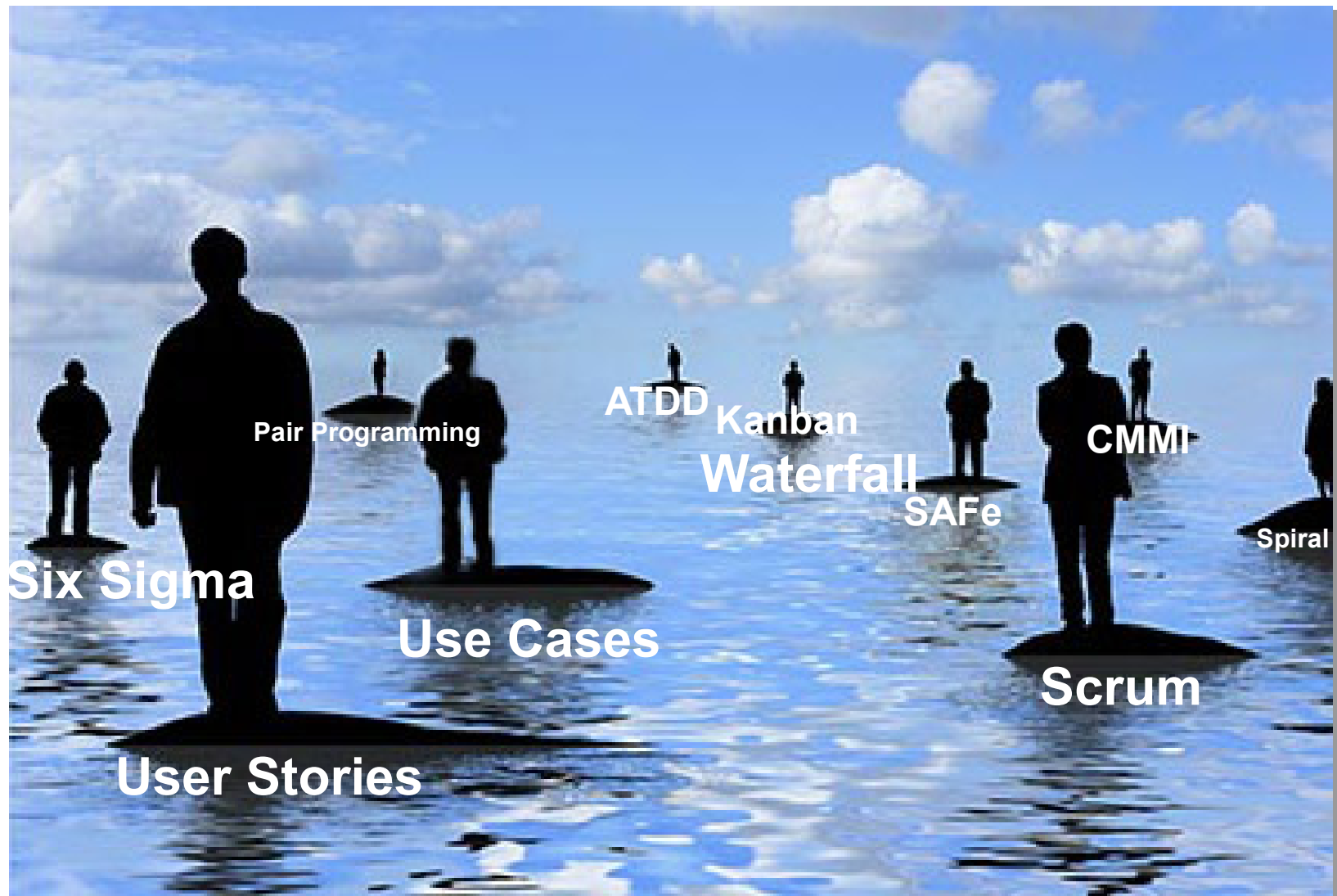
2. The kernel is actionable

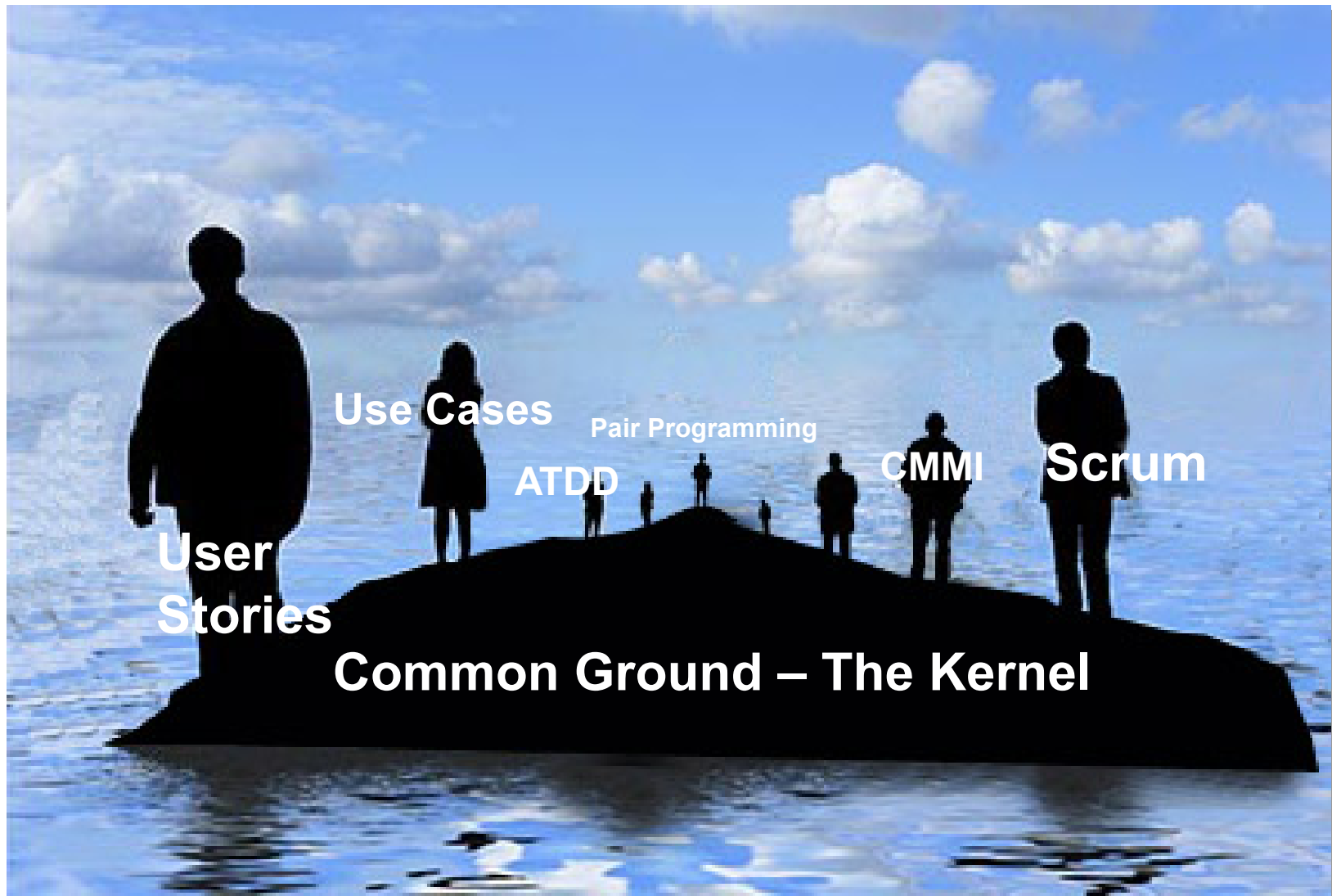


3. It relies on an intuitive graphical syntax

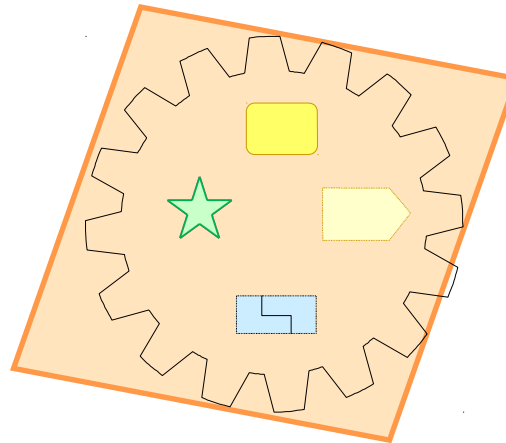


A Specific Problem: We have no Common Ground



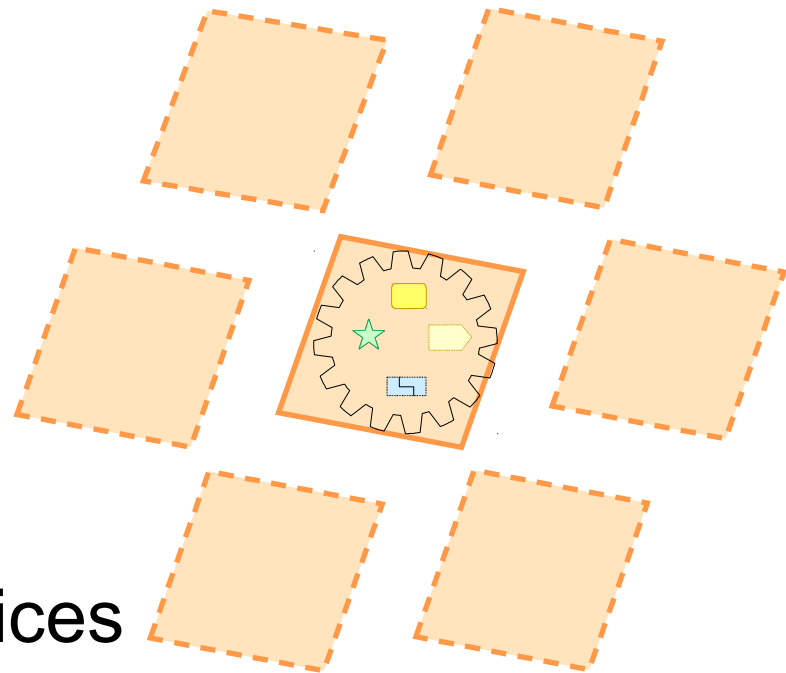


- Things that are **universal to all software development endeavors.**

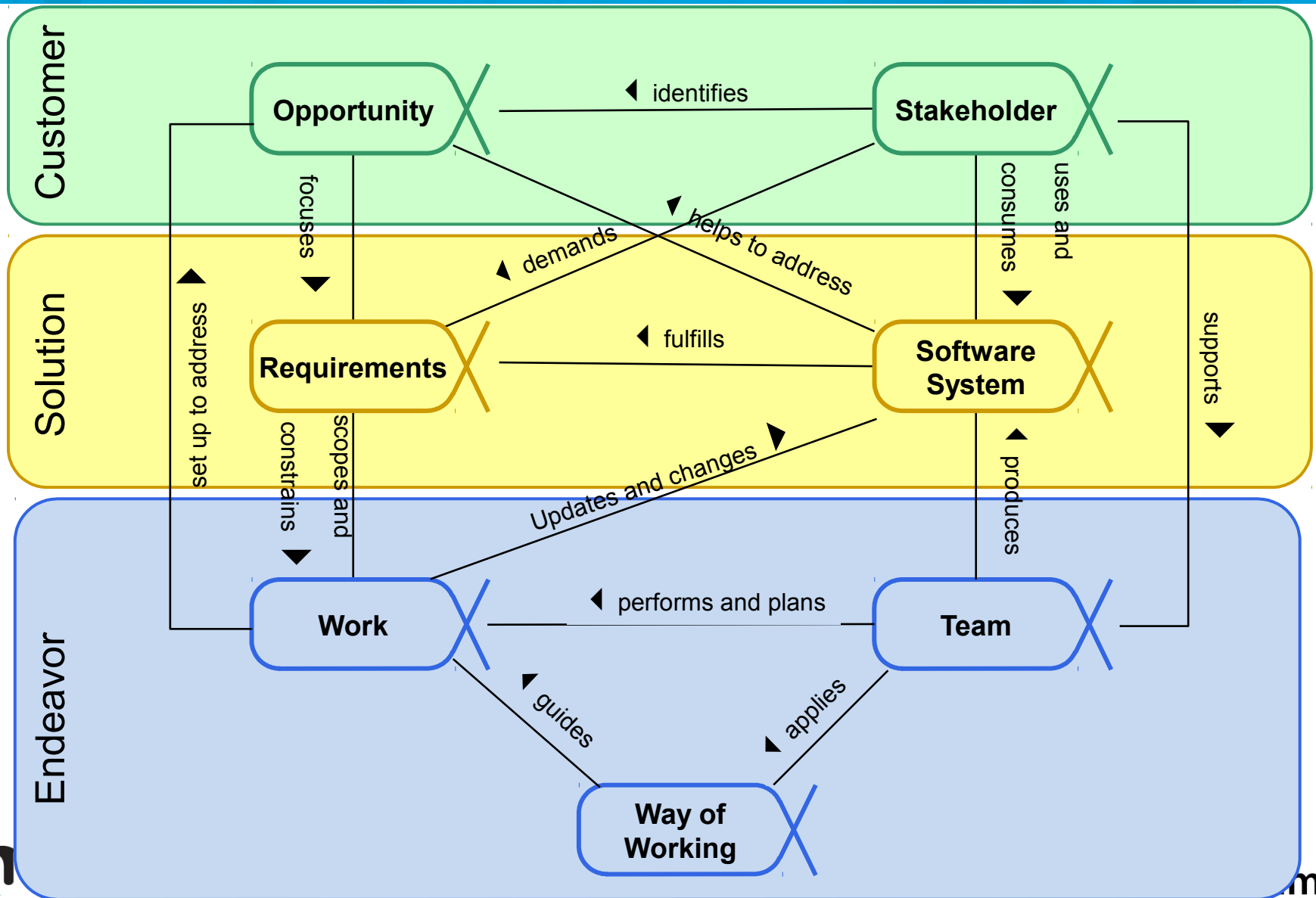


- Practices can be added to create your specific Way of Working.
- Practices such as Scrum, User Stories, Test-Driven Development, etc.
- But that is not the subject of today. ☹️

Practices



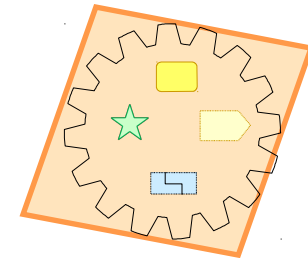
The Kernel and its Alphas



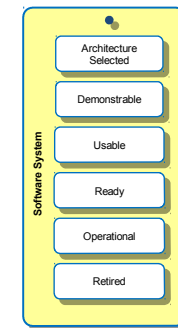
There are particularly three things that are new with SEMAT



1. SEMAT relies on a common ground or a kernel



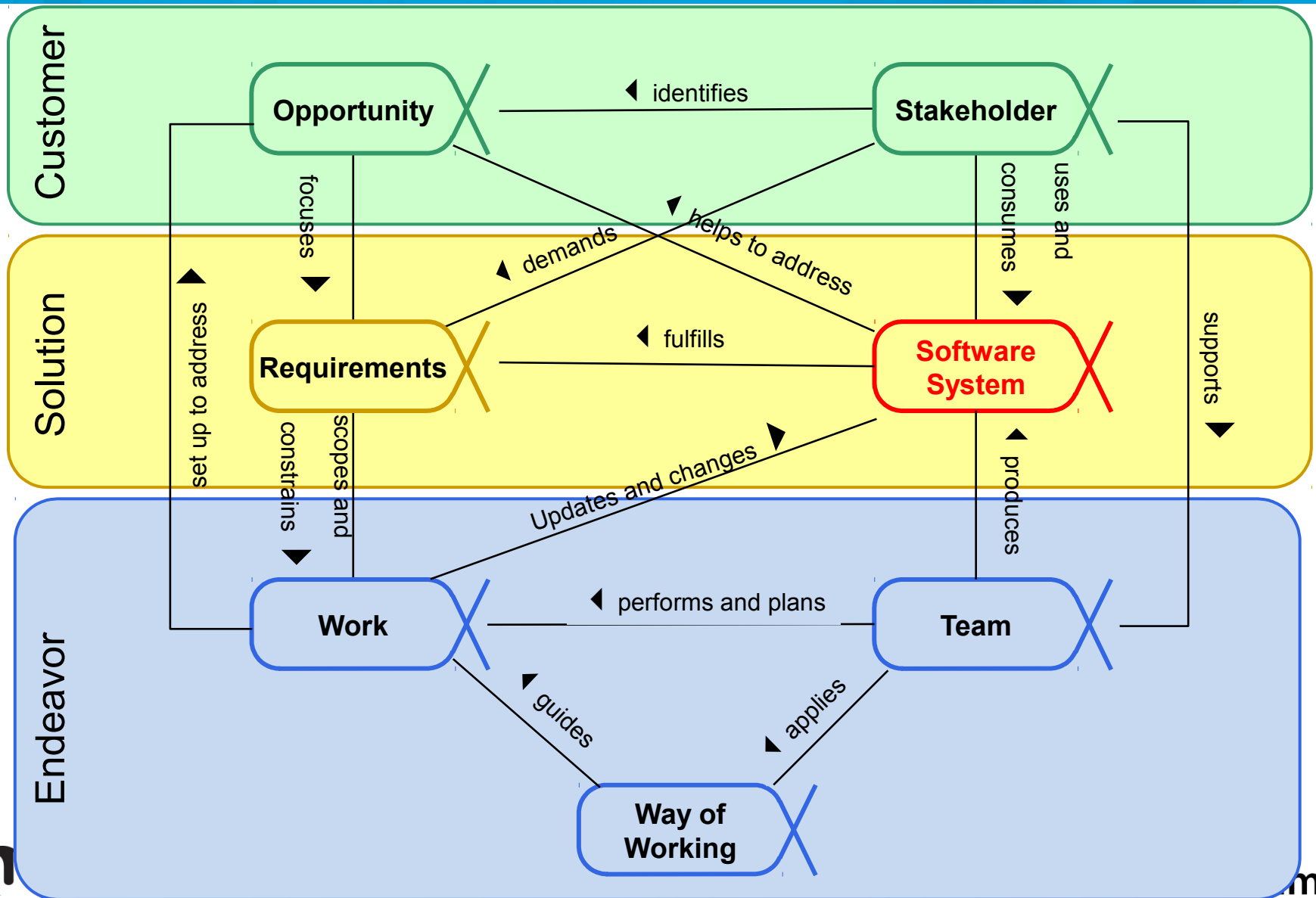
2. The kernel is actionable



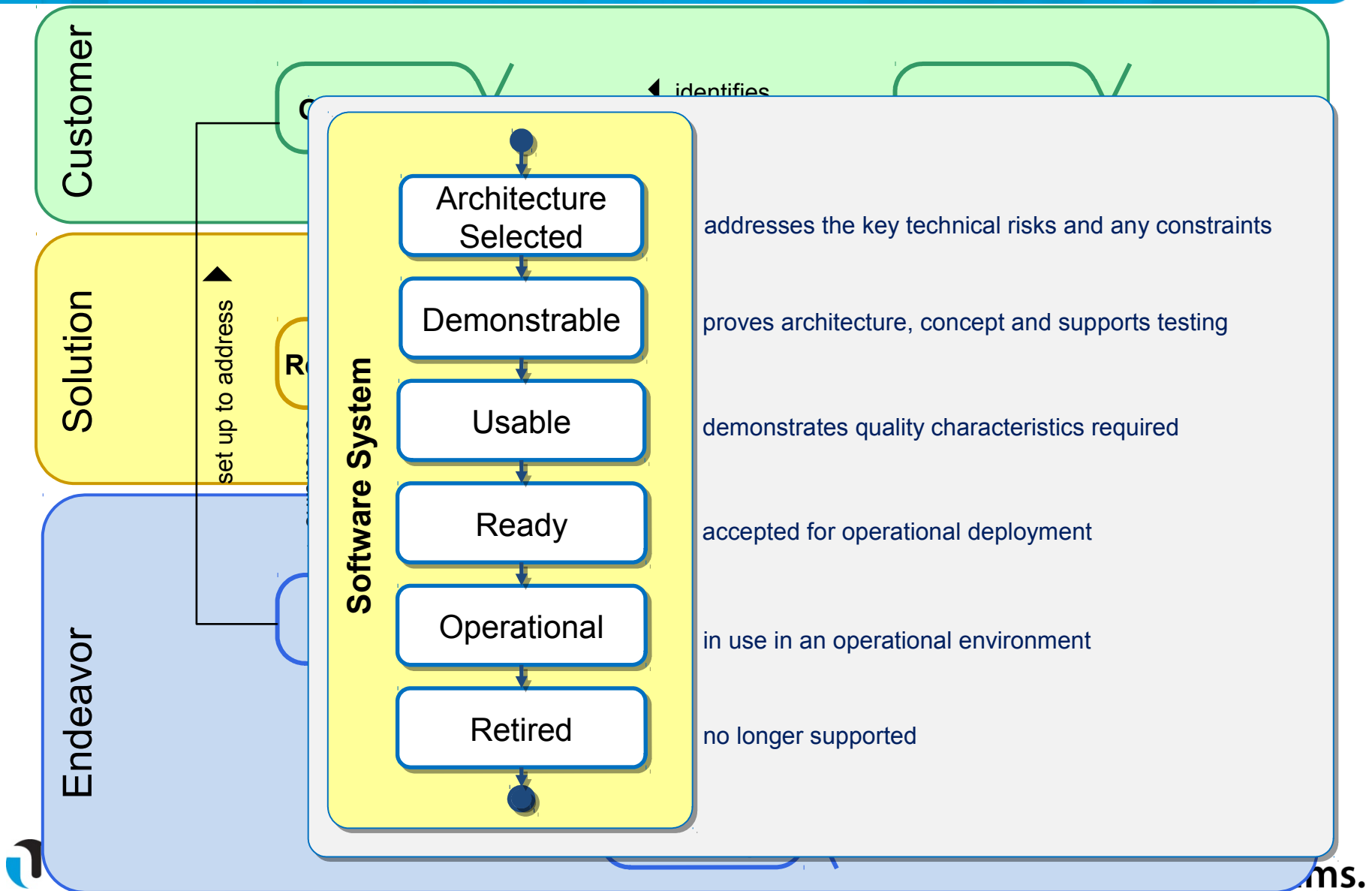
3. It relies on an intuitive graphical syntax



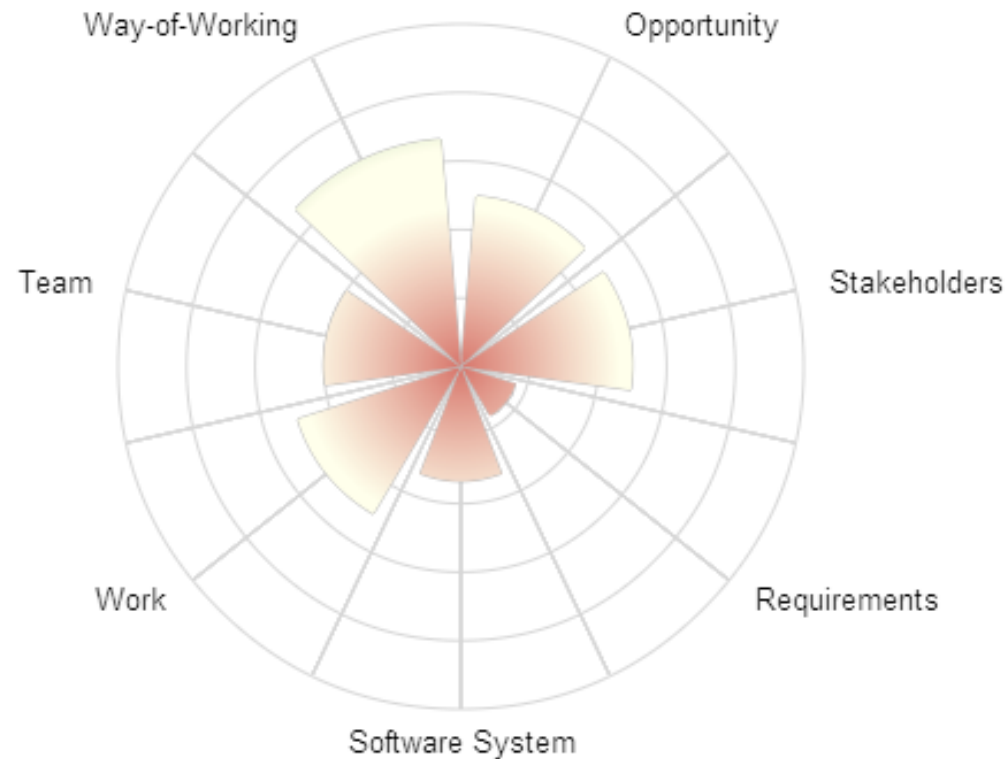
The Kernel is more than a static model – it is actionable



The alphas have states and checklists



Every Alpha represents one dimension

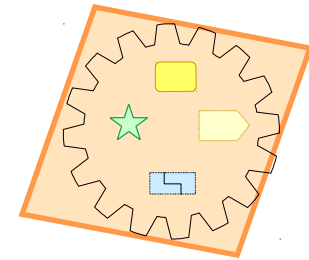


<http://sematacc.meteor.com/>

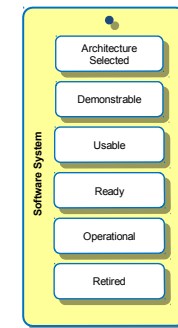
There are particularly three things that are new with SEMAT



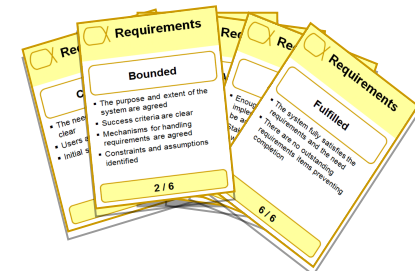
1. SEMAT relies on a common ground or a kernel



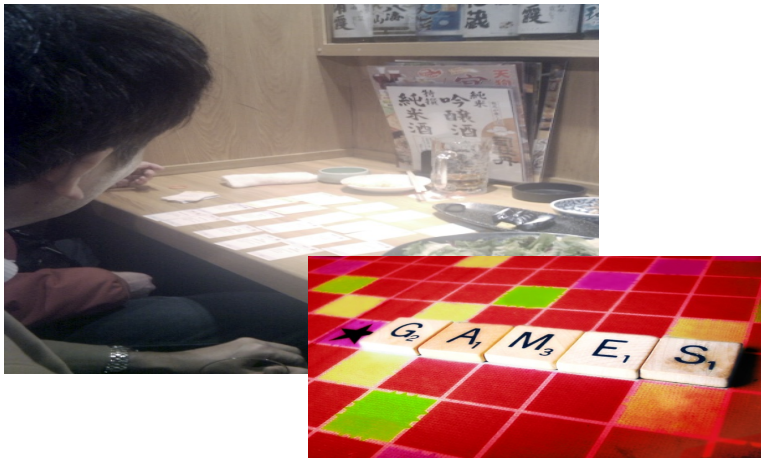
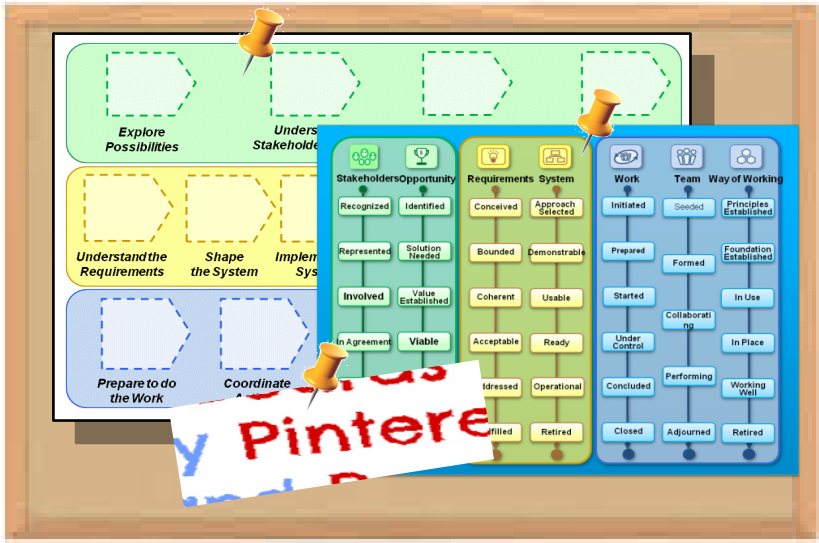
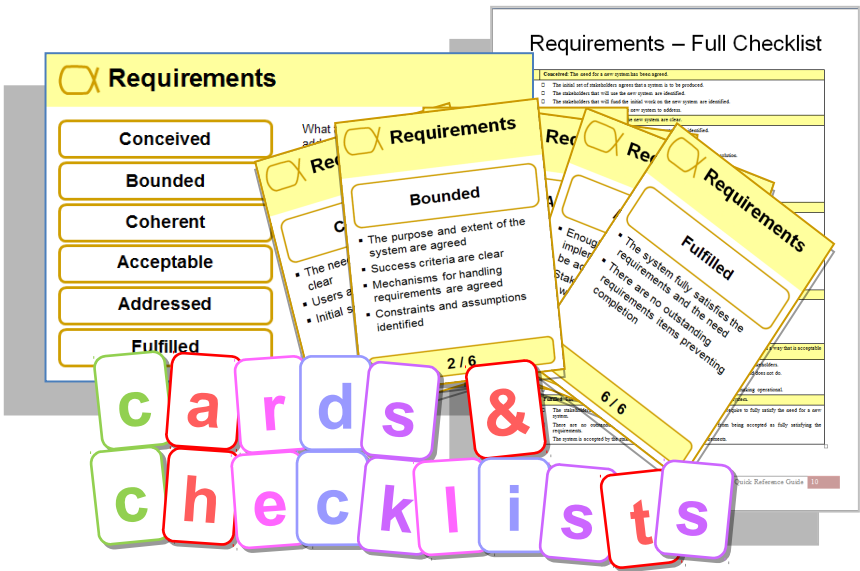
2. The kernel is actionable



3. It relies on an intuitive graphical syntax



Essence made tangible with well-formed graphics

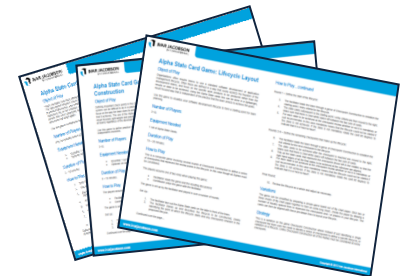


Play the Games



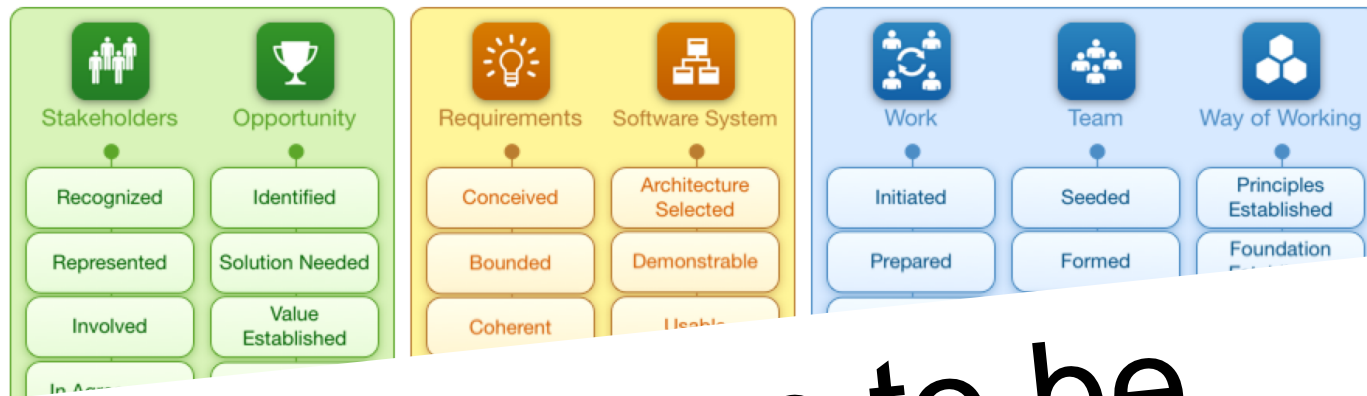
- You can play many games

Progress Poker	Lifecycle Layout
Chase the State	Milestone Mapping
Objective Go	Health Monitoring
Checkpoint Construction	And more.....



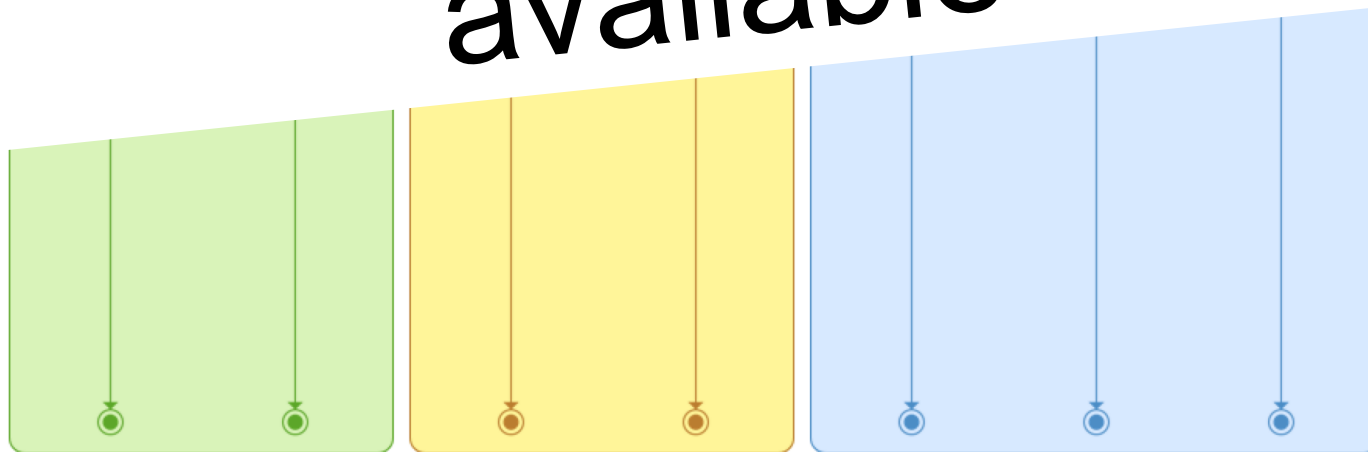
- <http://www.ivarjacobson.com/alphastatecards/>

Plan: Determine Current State



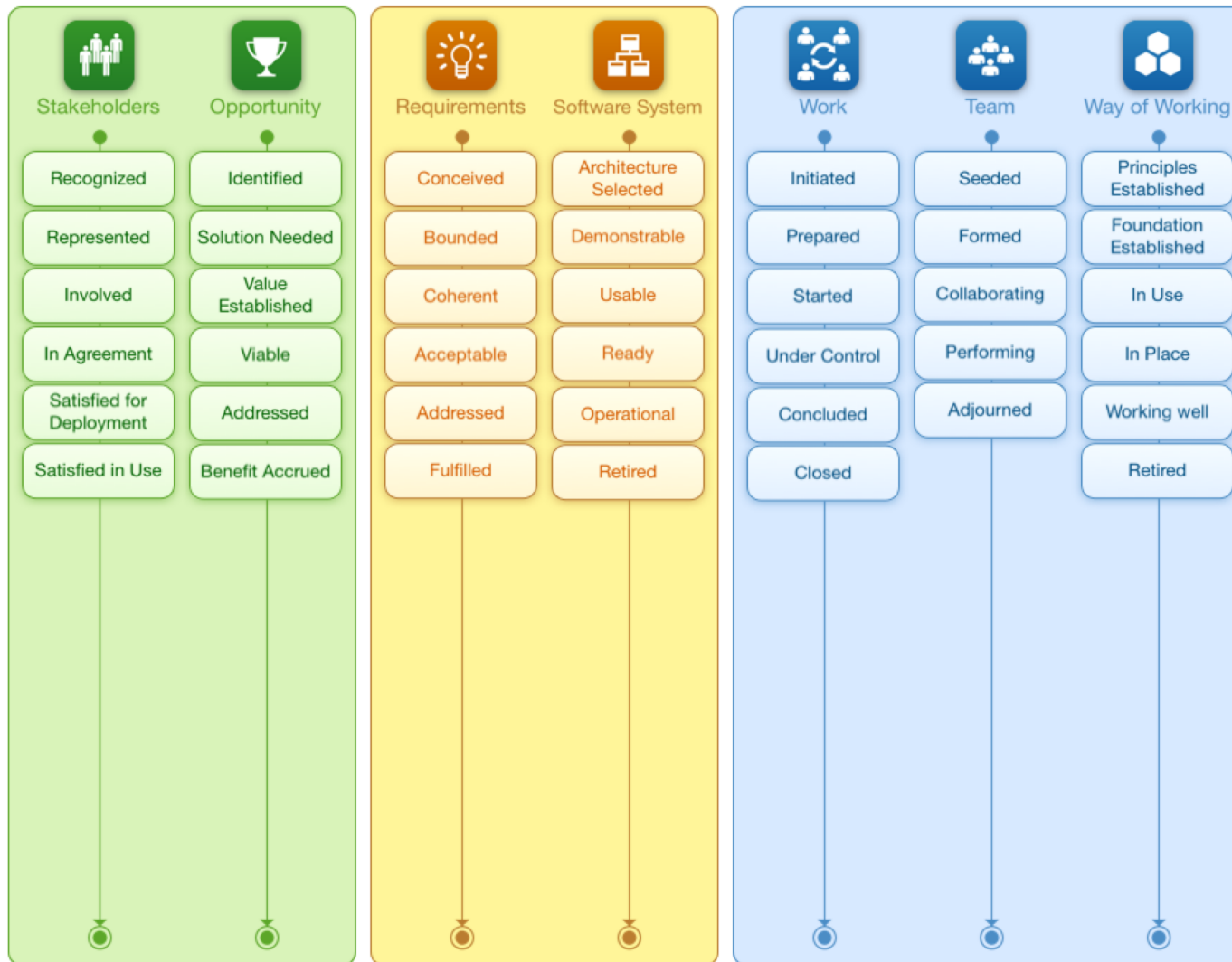
All
Alpha
State-
Line

App soon to be
available



Plan: Determine Current State

All
Alpha
States
Lined Up



Checkpoints for an example state

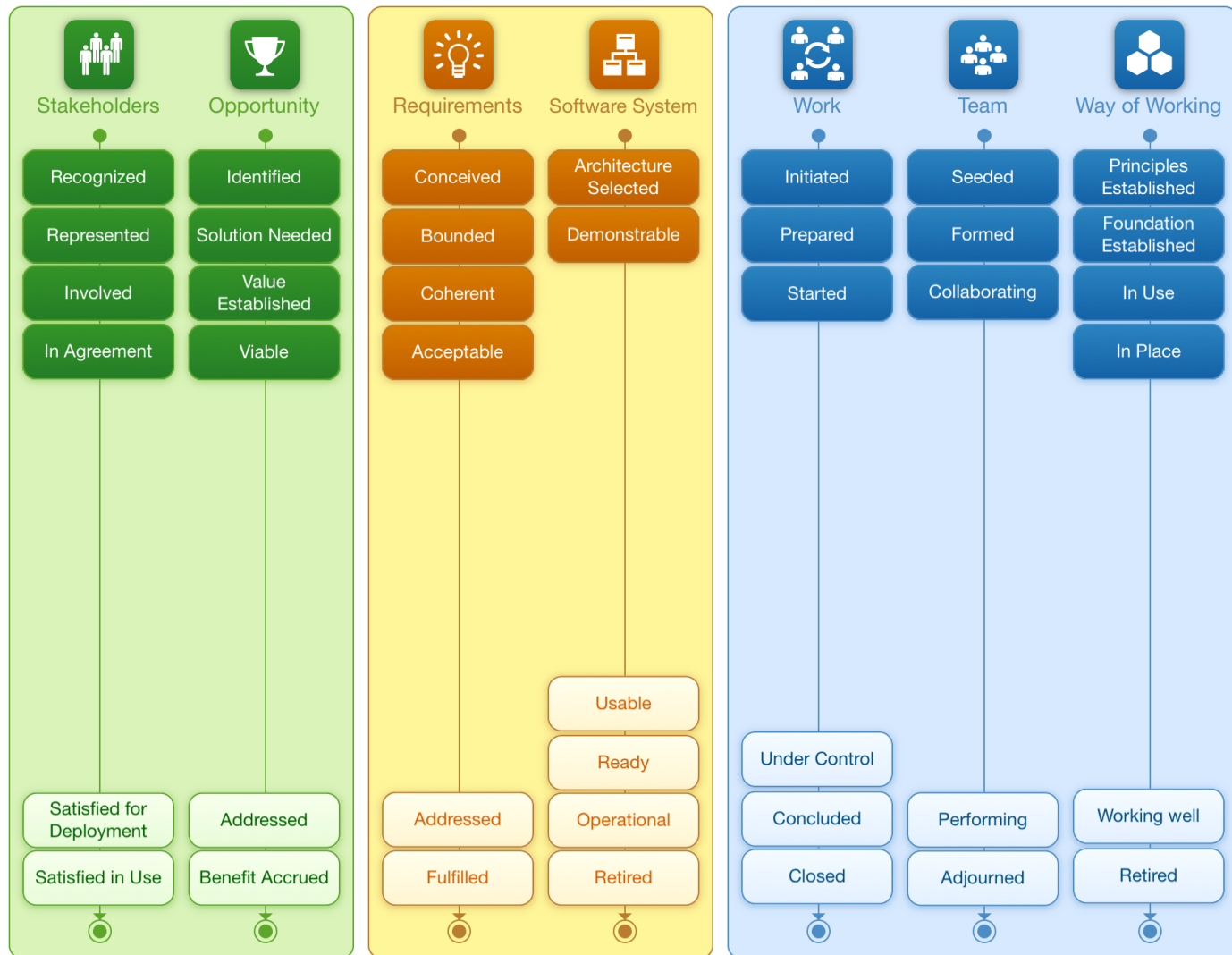


Plan: Determine Current State

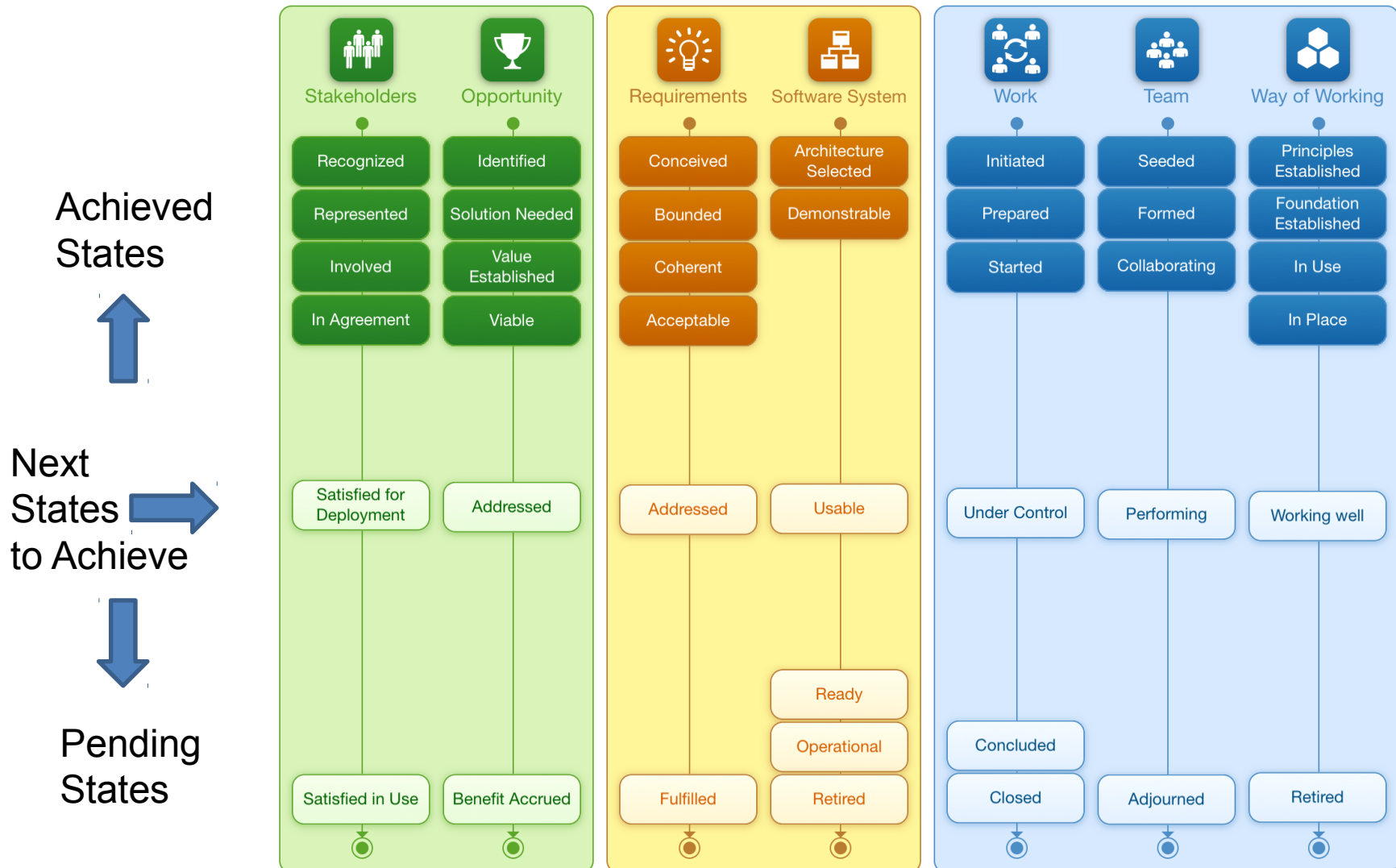
Achieved States



Pending States



Plan: Determine Next State



Plan: Determine How to Achieve Next State



Next States to Achieve →

Plan: Determine How to Achieve Next State

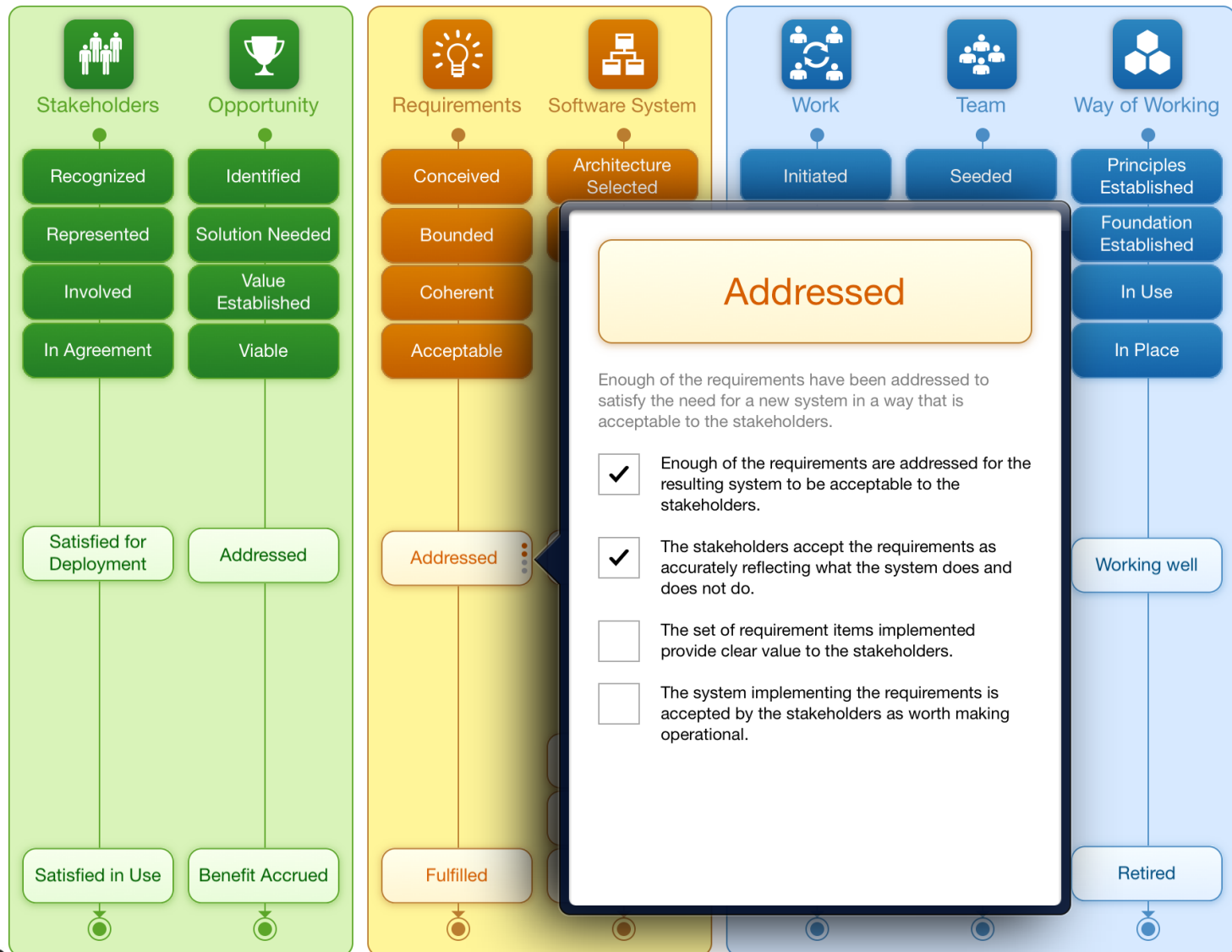
Next
States →
to Achieve



Plan: Determine How to Achieve Next State



Next States to Achieve →



Plan: Determine How to Achieve Next State

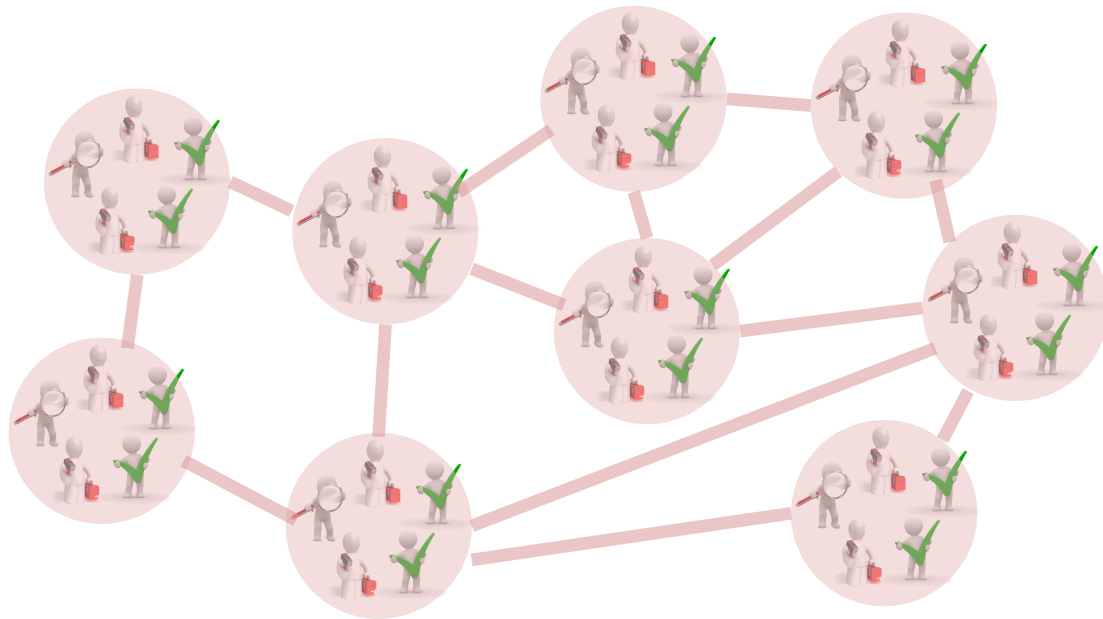
Next
States →
to Achieve





Helping Agile Teams

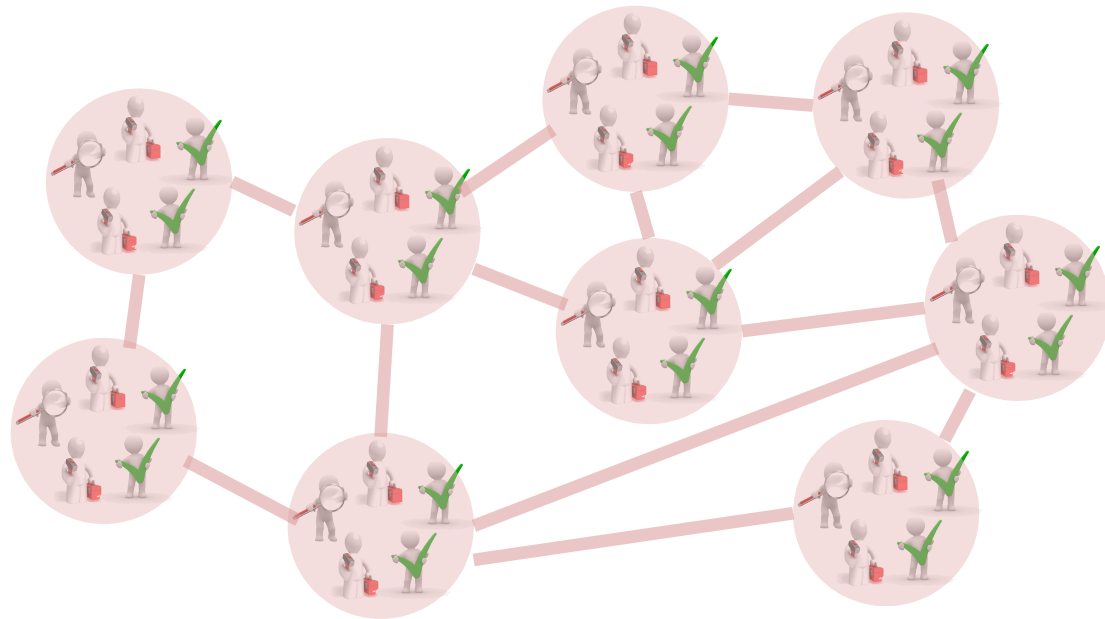
And Agile Organizations





Helping Agile Teams

And Agile Organizations

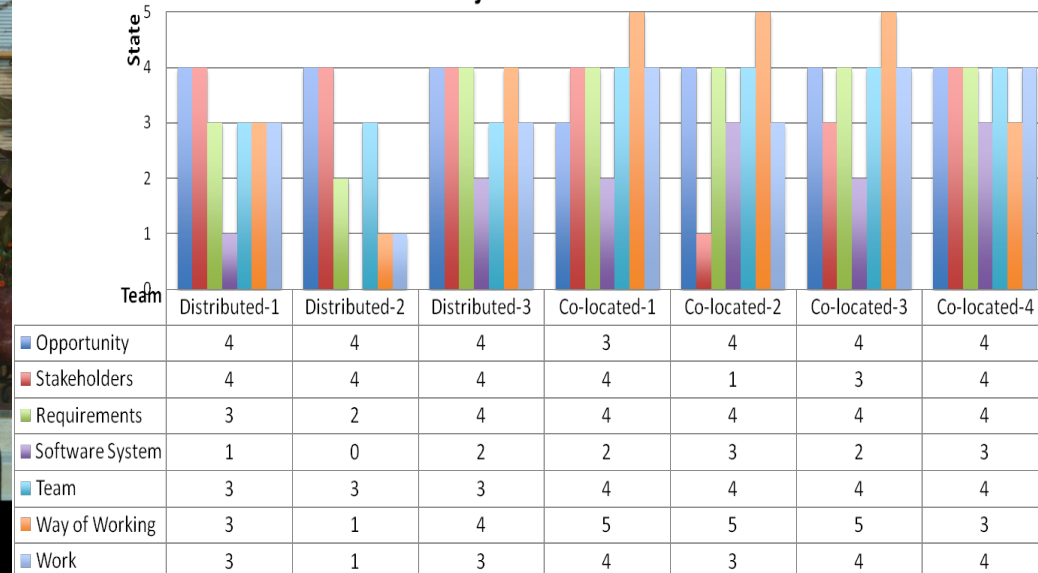


Taking a holistic approach
and exploiting the common ground



Carnegie Mellon®

Project State at Week 6



Reprinted by permission of Cecile Peraire, CMU West

All 7 CMU-SV practicum teams used different sets of s/w engineering practices

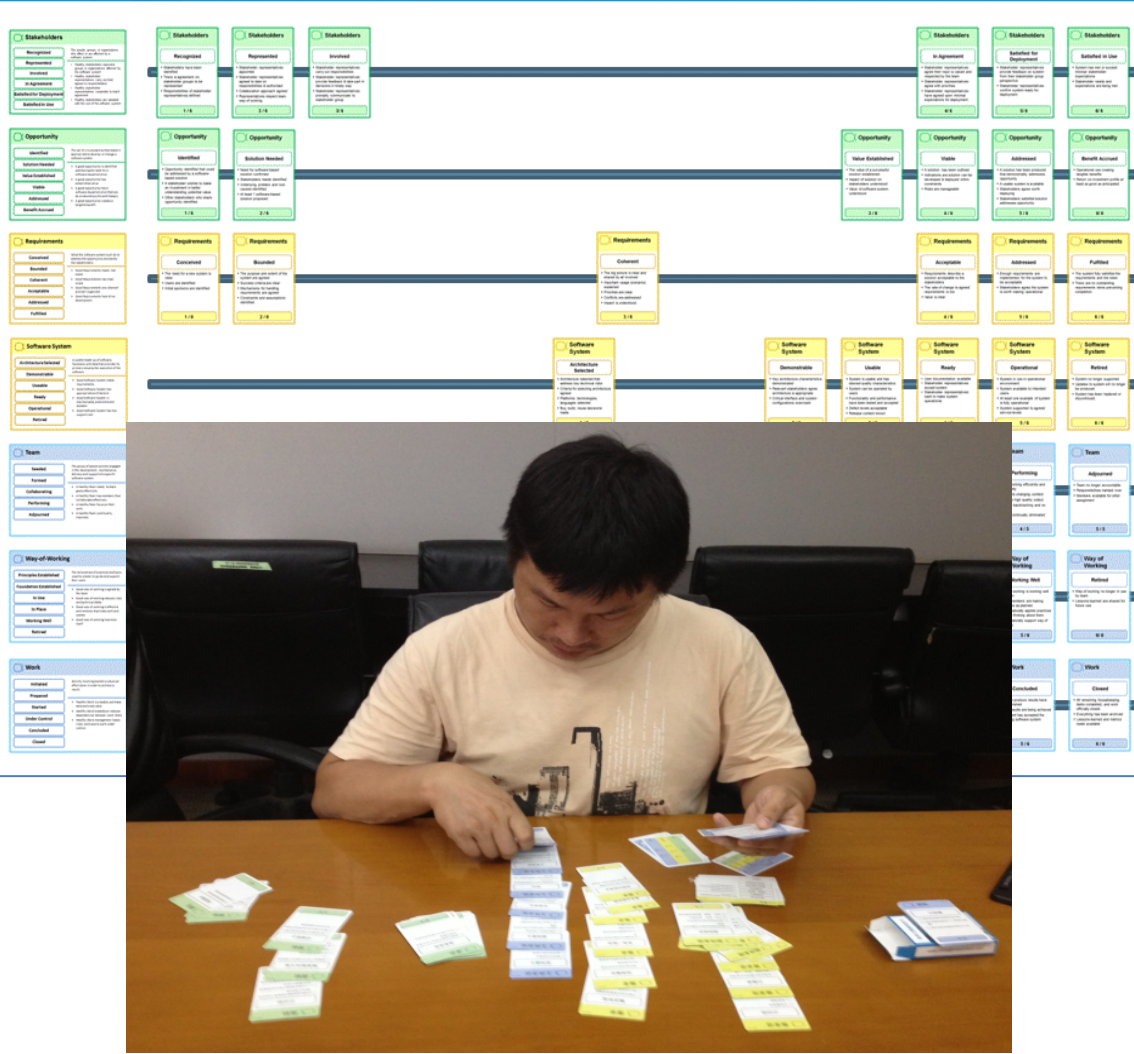
Progress & Health

- Measure progress & health of your teams regardless of practices selected.

Avoiding Problems

- Detect systemic problems early & take appropriate action

Getting Started



Understanding where you are

- What's already been achieved?
- What are the risks?

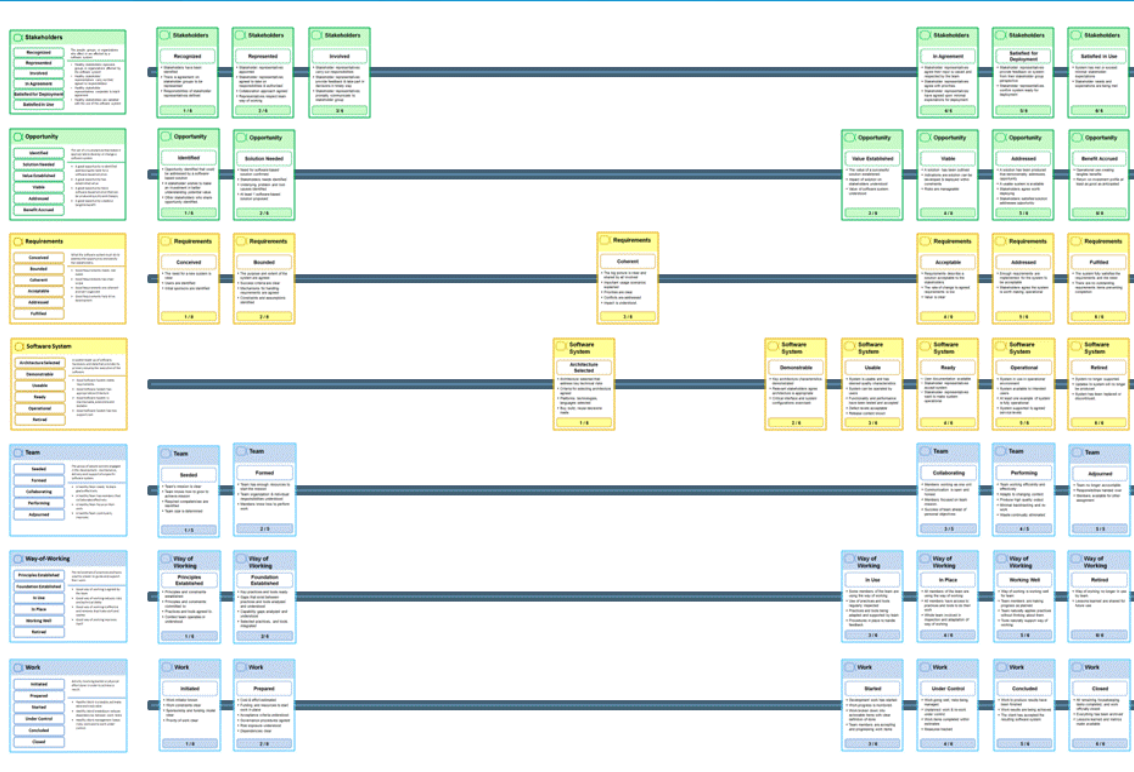
In Action:

- An internal coach in a large telecom product company.

Benefits:

- Detected risks in working with stakeholders.

Getting Started



Understanding where you are

- What's already been achieved?
- What are the risks?

In Action:

- An internal coach in a large telecom product company.

Benefits:

- Detected risks in working with stakeholders.

Scaling Up

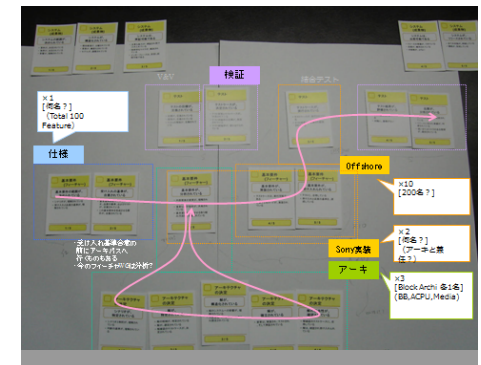
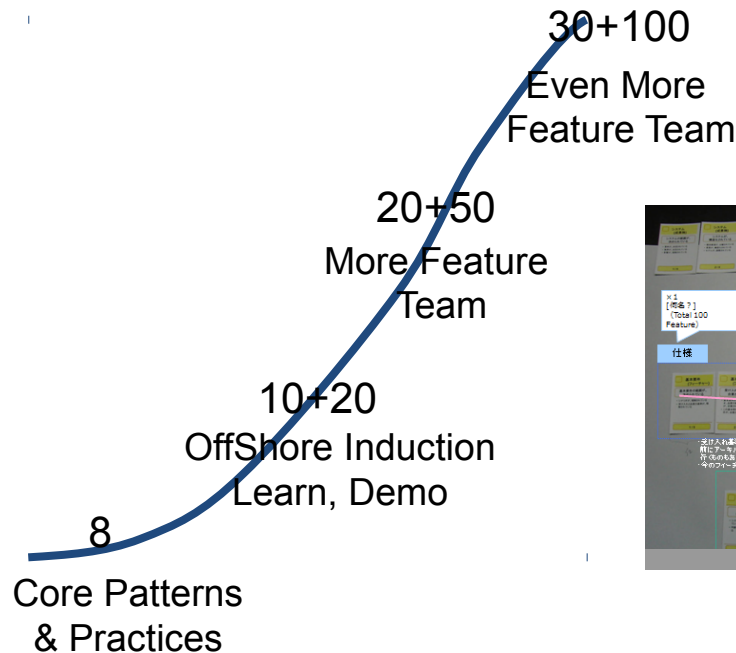
- How to help large development team collaborate

In Action:

- Large development involving offshore members (50+200) developers

Benefits:

- Cards facilitate describing new way of working
- Cards help new (feature) team leaders guide members

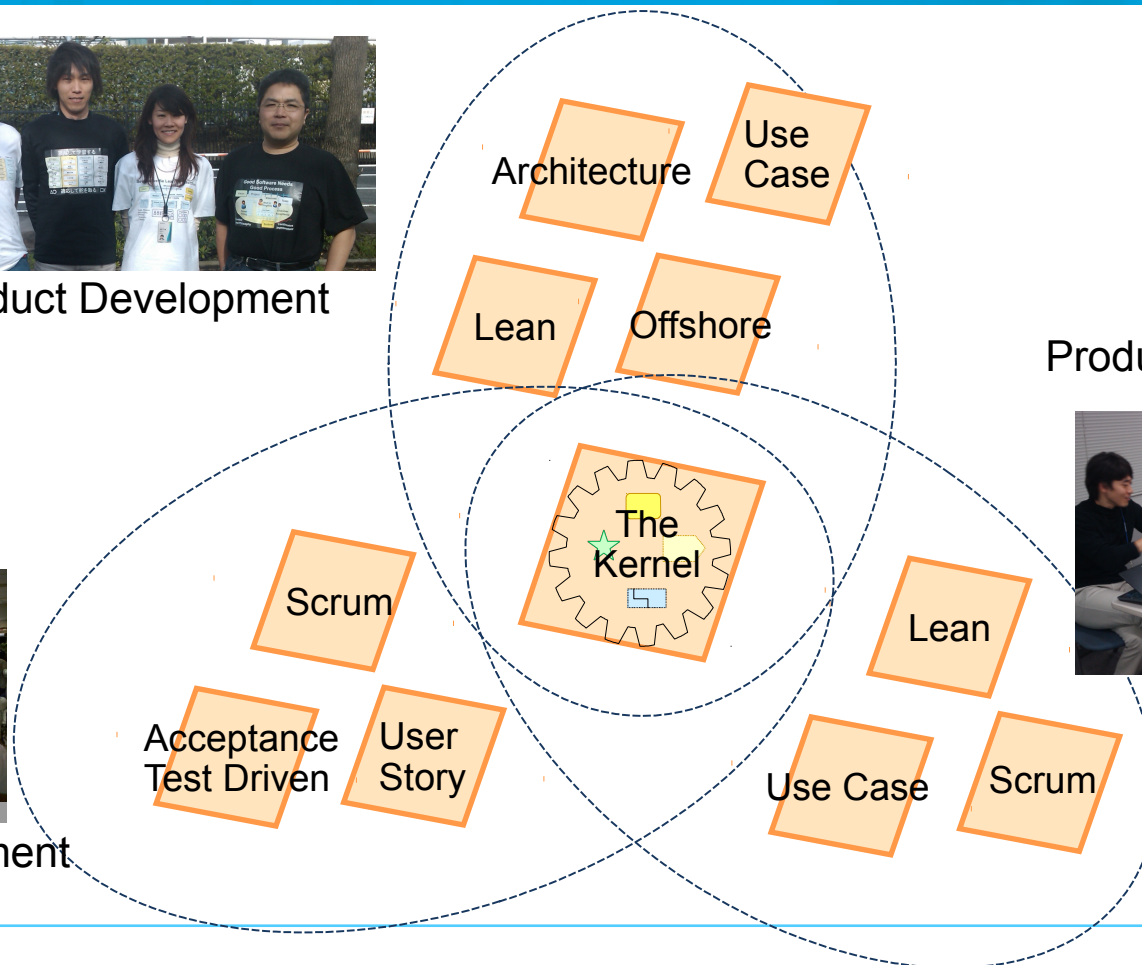




Offshore Product Development



Internet Development



Consumer Product Development



Many **Ways of Working** on the same kernel.

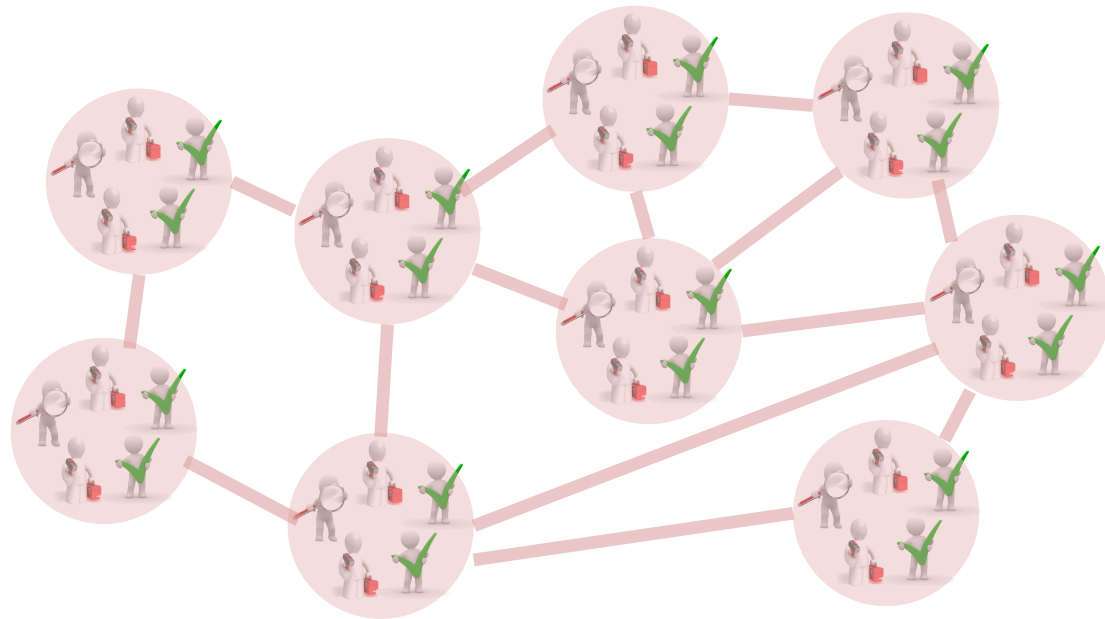
- **Understand where you are and where you are going**
 - Understand what needs to be addressed
 - Holistically track progress and health
 - Keep projects in balance and avoid catastrophic failures
 - Form good sprint goals and other objectives
 - Bring people together
- **Learn and share your way of development**
 - Share and compare practices
 - Build effective ways of working
 - Define practice independent checkpoints, and lifecycles

The Value of Essence



Helping Agile Teams

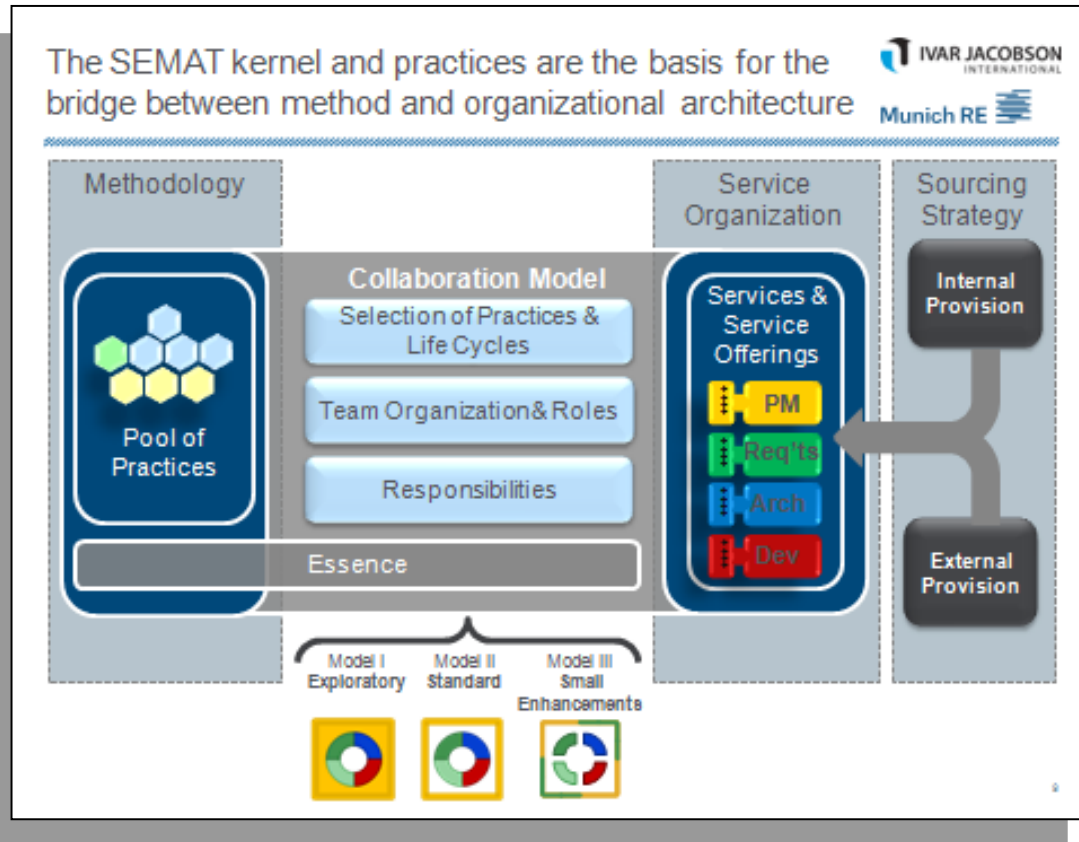
And Agile Organizations



There are several case studies



- KPN, a large telecom operator relying on outsourcing
- Fujitsu UK
- Munich Re, a large insurance company working all around the world



The challenge

- Globally distributed Application Dev't
- High-levels of out-sourcing & off-shoring
- Service organization

The solution

- Agile starter packs
- Practice Exchange
- Governance as a first class citizen

The SEMAT kernel and practices are the basis for the bridge between method and organizational architecture



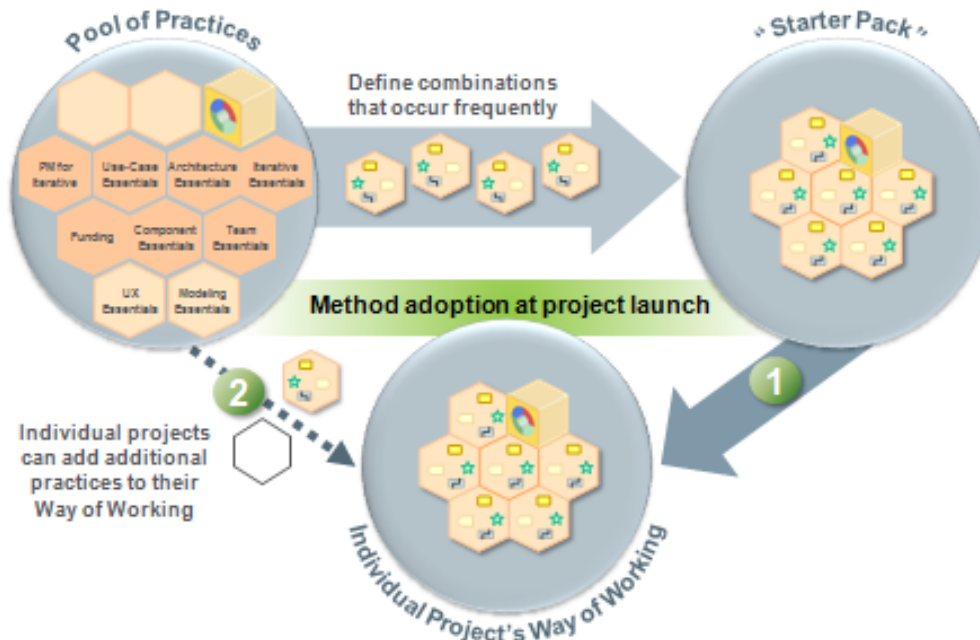
The challenge

- Globally distributed Application Dev't
- High-levels of out-sourcing & off-shoring
- Service organization

The solution

- Agile starter packs
- Practice Exchange
- Governance as a first class citizen

Methodology Element II: Practices Combining Practices as a Way of Working for Individual Projects



- Define practice independent governance procedures and quality gates.
- More readily and easily form teams and mobilize teams of teams.
- Scale agile approaches across teams of teams and systems of systems.
- Select enterprise level tooling.

Conclusion:
SEMAT and Agile Perfect Partners

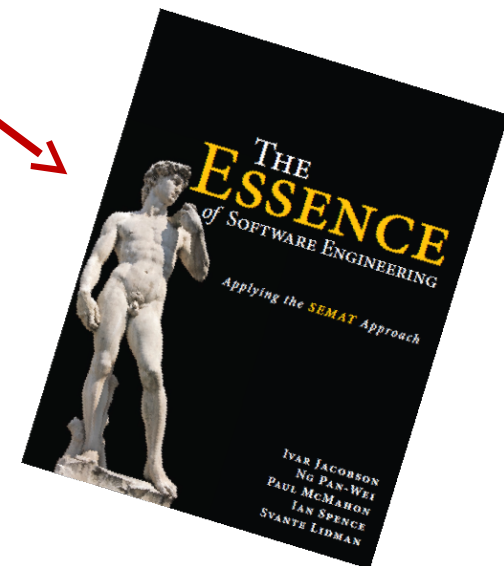
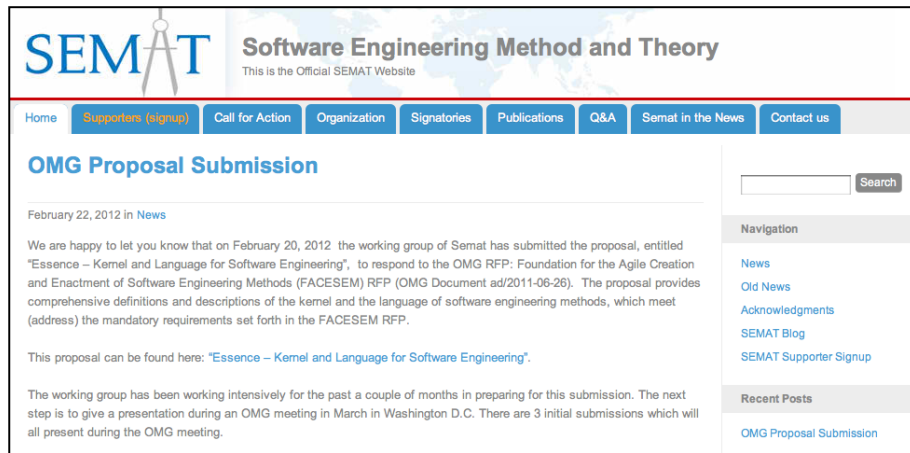


Get the cards and play the games



<http://www.ivarjacobson.com/alphastatecards/>

- Join the community and get involved
- Become a supporter.
Go to www.semat.org
- Or read the book



Thank You for Your Time!

www.ivarjacobson.com



- Email
 - ivar@ivarjacobson.com
- OMG website
 - www.omg.org
- SEMAT website
 - www.semat.org

